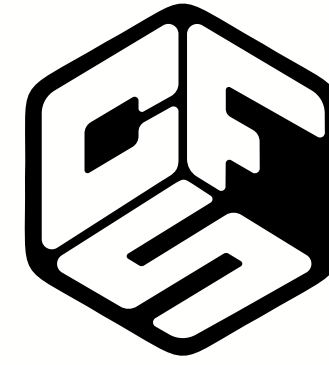
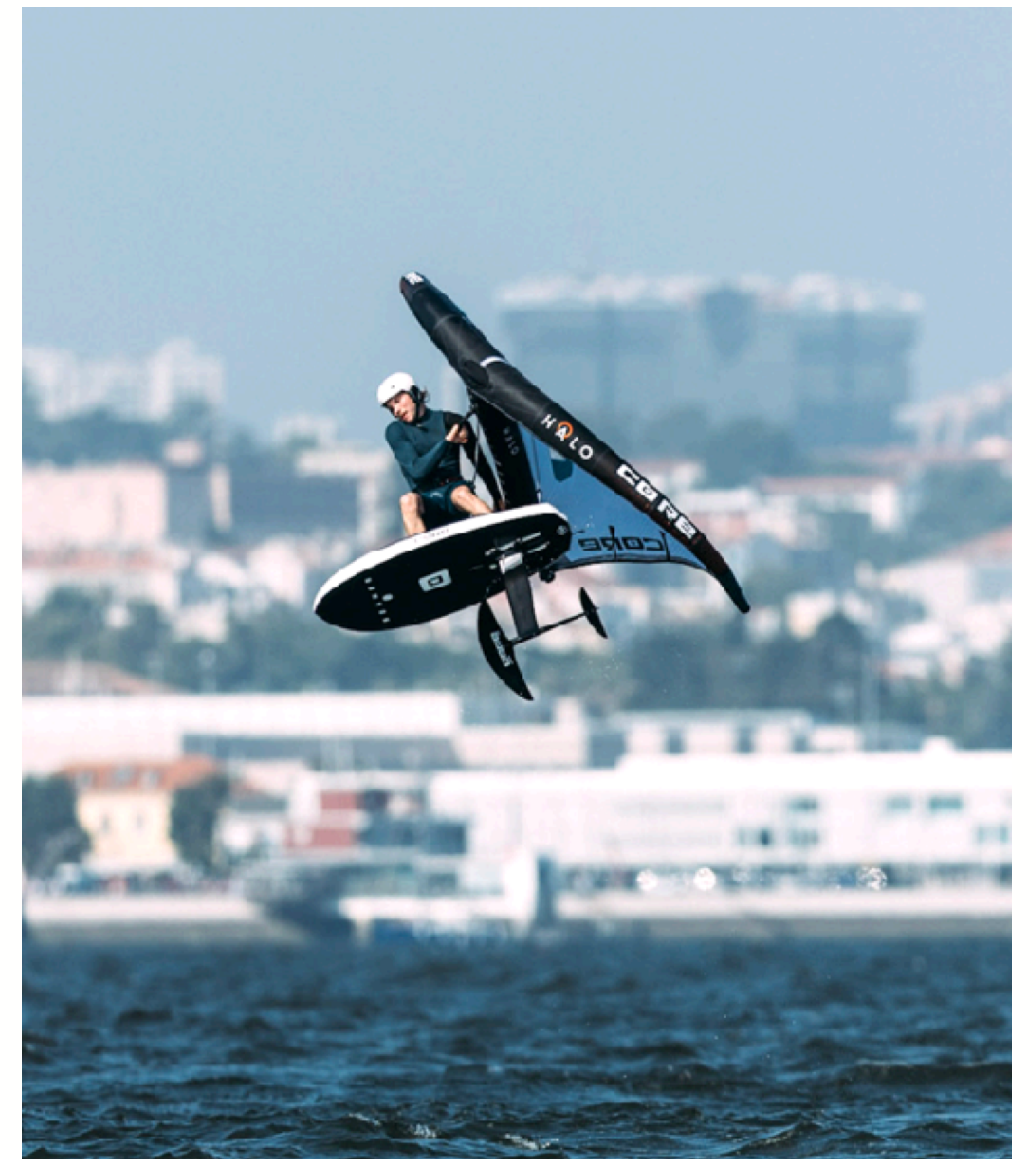


CORE



COMPATIBLE  
FOIL  
SYSTEM



- RETAIL GUIDE -



# MODULAR BY DESIGN. STRONGER BY CHOICE.

Foiling is evolving faster than ever. With the success of our Spectrum and VERT series, CORE has set strong foundations in both all-round and high-performance wingfoiling. But as rider styles diversify, the need for adaptable solutions becomes greater.

That's why we've reworked and expanded our lineup to make it truly future-ready. The new CORE Compatible Foiling System (CFS) brings more flexibility than ever – giving riders the freedom to tailor their setups, and retailers a clear, modular portfolio that's easy to explain, sell, and stock.








This deck will guide you through the key updates, help you structure your shop in line with the new system, and ultimately equip you to provide the best possible advice and service to your customers.





# THE CFS SYSTEM

With the launch of the new CFS series, we’re redefining the structure of our foil portfolio. To create more clarity and consistency, the familiar names SPECTRUM and VERT will from now on be used exclusively for the front wings. This makes the system easier to navigate for your customers and simplifies your shop setup at the same time.

FULLY COMPATIBLE							
CFS SPECTRUM FRONTWING			CFS VERT FRONTWING		CFS PULSE FRONTWING	CFS CARBON MAST	CFS ALUMINIUM MAST
							
SPECTRUM			VERT		PULSE		
SIZES	850		700		1990	74	60
	1250		850			82	70
	1550		1050			90	80
	1850						90
	2150						
CFS STABILIZERS						CFS FUSELAGES	
							
						190	60
						220	64
						300	70





# INDIVIDUAL PRODUCTS





# SPECTRUM



The Spectrum frontwings are your reliable partner from the first take-off to progressive manoeuvres. With their medium aspect ratio design, they offer the perfect balance of control, agility and efficiency – for riders of all levels. Beginners benefit from smooth, predictable lift and high stability, while advanced riders value the precise response and silky glide in turns, waves or jumps. Made from high-strength, multi-layer carbon laminate, they combine low weight with durability – for progress and fun in every session

SURFACE CM²    SPAN CM    AR

850	76	6,8	The most responsive Spectrum front wing. Perfect for freestyle moves, tight wave turns, and controlled speed. Combines agility with versatility for a wide range of conditions.
1250	89	6,3	Blends agility with stable control. Whether freestyle, mid-size waves, or relaxed freeriding – this wing feels at home in many conditions.
1550	91	5,3	Early take-off, smooth glide, and harmonious handling. An ideal partner for small waves and versatile freeride sessions.
1850	97	5,1	Easy handling, early lift, and a comfortable level of stability. Perfect for long sessions, relaxed cruising, and steady progression.
2150	104	5	Calm, stable flight and effortless starts. Ideal for relaxed rides, first flights, and maximum confidence on the water.

## PERFECT MATCH

For the Spectrum front wings, we recommend the CFS300 stabilizer for maximum control and smoothness. For more speed and reactivity, the CFS220 or CFS190 stabilizer is the better choice – especially with the smaller front wings. The 70 cm fuselage offers the most stable ride. Riders looking for more agility and tighter turning radii will appreciate the 64 cm fuselage.





VERT



The VERT frontwings are built for ambitious riders who make no compromises. Their sleek high aspect ratio design delivers maximum glide, high top speed and precise, razor-sharp handling – perfect for specific disciplines like speed, freestyle or long lines in the wave. Each size is specifically tuned to its individual parameters to excel in its element. The carbon laminate construction ensures outstanding stiffness and direct power transfer. For all who choose their foil deliberately – and fly it at the highest level.

SURFACE CM²    SPAN CM    AR

**700**    70    7

The pinnacle of the VERT lineup. For maximum speed and agility, there’s no way around this wing. The minimal surface lets you keep pace with the fastest waves while enabling explosive take-offs into lofty heights.

**850**    90    9,5

The golden middle ground. A perfect balance between performance and speed, with reduced span compared to the 1050 for a noticeable boost in agility both on the water and in the air. An ideal all-rounder and freestyle favorite.

**1050**    100    9,5

Unmatched glide performance. Cruises effortlessly over long distances with early, powerful lift. In the surf, it delivers a longboard feel and turns light-wind sessions into pure relaxation flights.

PERFECT MATCH

For the VERT front wings, we recommend the CFS220 stabilizer. Riders seeking maximum agility and speed should opt for the CFS190 stabilizer. The 70 cm fuselage offers the most stable ride. For tighter turning radii and more efficient pumping, especially in waves, we recommend the 64 cm fuselage. For maximum pop in freestyle, choose the 60 cm fuselage.





**PULSE**



The Pulse frontwings are designed for riders who want maximum lift, stability and efficiency when pumping. The evenly distributed profile across the entire span delivers powerful, extended glides, while the anhedral design prevents unwanted roll-off. The thin, progressive profile responds instantly, gives clear feedback on pumping rhythm, and excels in dockstarts as well as on long flatwater runs. Pure, controlled pumping performance – even in demanding conditions.

SURFACE CM²	SPAN CM	AR
1990	140	9,8

The largest Pulse front wing delivers endless lift and impressive glide, even at minimal speeds. Its huge span provides exceptional efficiency and long-lasting pace with every pump. Perfect for extended flatwater runs and maximum range per energy input.

PERFECT MATCH

The PULSE front wings are optimized for the CFS190 stabiliser and the 64 cm fuselage. Even more agility and tighter turning radii are possible with the 60 cm fuselage.





# STABILIZER

The stabilizer is the hidden key to a foil's character. Within the CFS system, three different sizes allow riders to adapt stability, agility, and overall feel to their personal style. Built from multi-layer carbon laminate, all stabilizers combine low weight with high stiffness – for direct feedback and maximum control in every session.



## 300 - MAXIMUM STABILITY

Delivers intuitive control, smooth flight phases, and the easiest waterstarts. Its subtle V-shape gives the foil a harmonious, predictable feel – the perfect match for Spectrum front wings and riders who value balance and comfort.



## 220 - BALANCED AGILITY

With reduced surface and profile, the 220 unlocks higher speed and playful agility. Designed to let the VERT front wings show their full performance potential and also a great update to unleash the smaller SPECTRUM frontwings.



## 190 - PURE PERFORMANCE

The thinnest and fastest stabilizer in the CORE range. Sharp turns, fast transitions, and maximum glide efficiency. Ideal for experienced riders who want uncompromising agility, efficient pumping, and a highly responsive ride.





# MASTS

The mast is the backbone of every foil setup – and within the CFS system, riders can choose between aluminium or carbon, each available in multiple lengths. Both versions are designed with CORE's precision engineering to deliver maximum stiffness, direct response, and seamless compatibility with the entire system.

## CFS ALUMINIUM MAST

Made from extruded aircraft-grade aluminium, the CFS Alu Mast combines high stiffness, impact resistance, and great value. Its Five-Stringer design reinforces the most stressed areas, while the precisely milled fit ensures a rock-solid connection to the fuselage. The ideal choice for riders who want maximum durability and easy handling at a competitive price.

### SIZES

60 - 70 - 80 - 90



## CFS CARBON MAST

The CFS Carbon Mast is built for those chasing minimum weight and maximum performance. With its innovative PMMI foam-stringer sandwich construction, it delivers exceptional stiffness while reducing drag through a refined profile. The seamless mast base ensures direct power transfer and pure control at any speed – the premium option for ambitious riders.

### SIZES

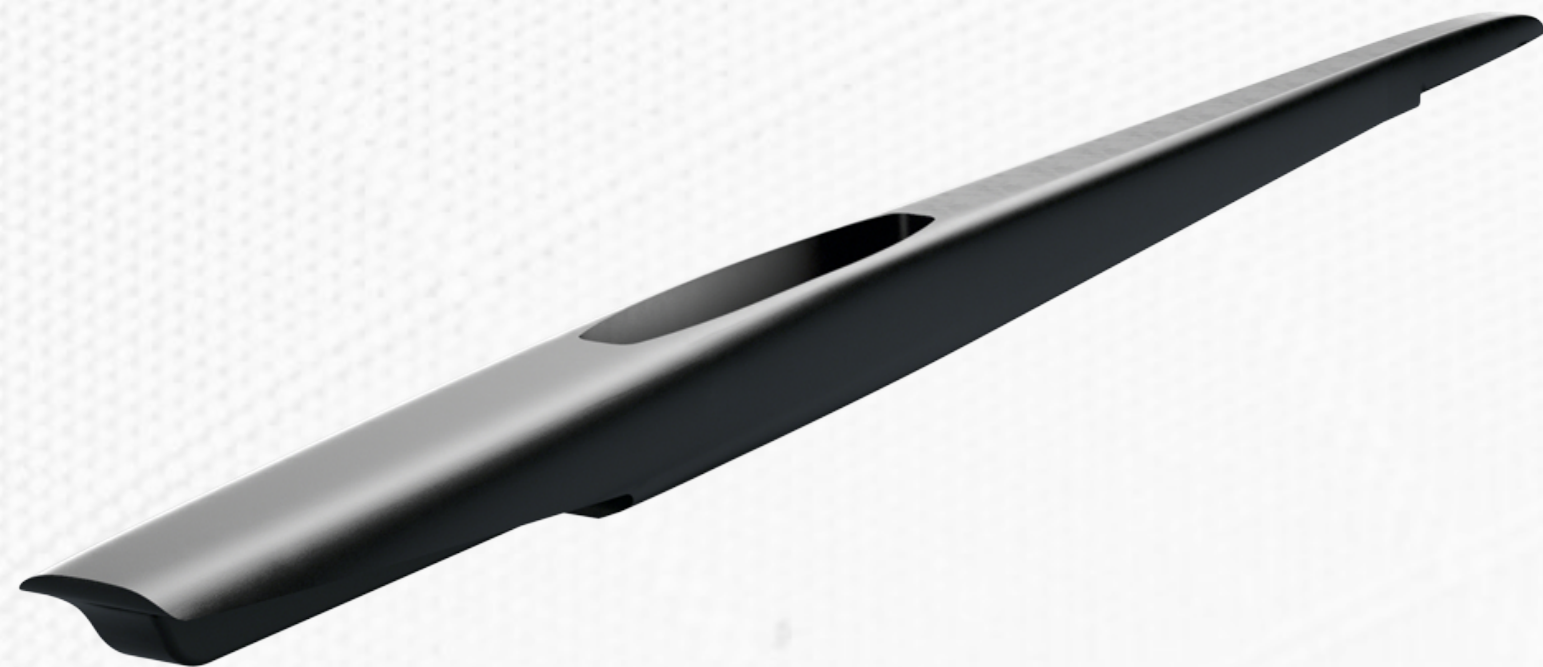
74 - 82 - 90





# FUSELAGE

CNC-milled from high-strength, saltwater-resistant aluminium, the CFS fuselages deliver maximum stiffness, low weight, and perfect precision fit. SS316 stainless steel inserts ensure long-lasting threads without the need for Tef Gel, while sealing plugs prevent water from entering. Available in three lengths, each tailored to specific riding styles.



## 70 – MAXIMUM TRACKING

The longest version provides ultimate directional stability and smooth, controlled turns. Perfect for wingfoiling in flat water, for beginners, and for riders who prioritize early lift and maximum stability.

## 64 – THE ALLROUNDER

Balanced performance between stability and agility. Ideal for pumpfoiling or surf foiling, where smooth turns, direct response, and efficient glide are key.

## 60 – RADICAL AGILITY

The most compact and agile option in the lineup. Delivers tight turns, fast transitions, and playful handling. Perfect for kitefoil, pumpfoil, and freestyle wingfoil, where responsiveness and precision matter most.





# MATCHING ACCESSORIES

Each CFS frontwing, mast and stabilizer will be delivered in a tailored-to-size, high quality cover. The frontwing and stabilizer covers are designed to fit on your mounted foil and come with a specific cover for the trailing edge as well as a pocket for your screws. These covers are included with every product and allow us not only to reduce packaging waste to almost zero, but also to significantly reduce shipping volume.







# BUYERS GUIDE & SHOP SETUPS





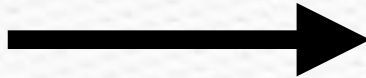
# BUYERS GUIDE - FIND YOUR PERFECT SETUP

The CFS Decision Matrix guides you step by step through the complete foil system. Starting with the front wing – the key element that defines your riding style – you then fine-tune your setup with stabilizer, mast, and fuselage. Each choice adds its own character, from stability to agility, from control to speed. The result: a perfectly tailored foil setup that matches your skills, conditions, and ambitions on the water.

## WHICH FRONTWING?



## WHICH STABILIZER?



## WHICH MAST?



## WHICH FUSELAGE?

- The front wing defines your riding style and main use case.
- **SPECTRUM**  
The allrounder. From first take-offs to progressive manoeuvres, versatile and easy to handle.
  - **VERT**  
For ambitious riders. Maximum glide, speed, and precision for performance-focused sessions.
  - **PULSE**  
Pure pump power. Designed for maximum lift, efficiency, and dockstarts.

- The stabilizer fine-tunes your setup, giving each wing its own character.
- **300 cm²**  
Maximum stability and smooth flight. Ideal for balance, beginners, and relaxed sessions.
  - **220 cm²**  
The balanced choice. More speed and agility while keeping good control – perfect with VERT.
  - **190 cm²**  
The radical option. Thin, fast, and highly agile. For efficient pumping, sharp turns, and responsive freestyle.

- The mast determines control, stiffness, and riding conditions.
- **Aluminium**  
Robust and cost-efficient. High stiffness and durability for all-round performance.
  - **Carbon**  
Lighter, stiffer, and drag-optimized. Premium choice for maximum efficiency and speed.

- The fuselage connects your setup and defines handling and stability.
- **70 cm**  
Maximum tracking and stability. Great for beginners, flat water, and smooth cruising.
  - **64 cm**  
The allrounder. Balanced mix of agility and control for wave and pump.
  - **60 cm**  
Maximum agility. Tight turns, fast response, and freestyle performance.





# SHOP RECOMMENDATIONS - SETS


For an ideal customer experience in your shop system, we recommend listing both the individual products and pre-designed sets. All details about our recommended sets can be found in the Excel file within the page „SETS“.

Within a SPECTRUM, VERT or PULSE set, the customer should be able to choose a fronting size, carbon or aluminum mast incl. size, a stabilizer and a fuselage.

The final prize should be calculated automatically based on the data given on the page „DATA“ within the same file.

A recommended shop text, as well as a link to all the provided images from our side

DOWNLOAD TEXTS & IMAGES



### CORE CFS FOIL SET VERT

Starting from:  
1.735,00 €  
\$ 1.685,00

Please choose:

Frontwing:	▼ CFS Wing Vert 700	729,00 €	\$ 699,00
Mast:	▼ CFS Carbon Mast 74cm	1.429,00 €	\$ 1.349,00
Mastbase:	Included	- €	\$ -
Stabilizer:	▼ CFS Stabilizer 190	299,00 €	\$ 299,00
Fuselage:	▼ CFS Fuselage 60cm	329,00 €	\$ 329,00
		<b>2.786,00 €</b>	<b>\$ 2.676,00</b>

Dropdown items to choose from

Automatic price calculation in your system

**Frontwing**  
The pinnacle of the VERT lineup. For maximum speed and agility, there's no way around this wing. The minimal surface lets you keep pace with the fastest waves while enabling explosive take-offs into lofty heights.

**The golden middle ground.** A perfect balance between performance and speed, with reduced span compared to the 1050 for a noticeable boost in agility both on the water and in the air. An ideal all-rounder and freestyle favourite.

**Unmatched glide performance.** Cruises effortlessly over long distances with hearty, powerful lift. In the surf, it delivers a longboard feel and turns light-wind sessions into pure relaxation flights.

**Mast**  
Choose the material and length of the mast for the perfect balance of control, stiffness, and weight.

**Aluminium** – Versatile all-round performance, precise CNC fit, and ultra-robust. Four lengths to cover every riding style.

**Carbon** – High-end performance. Ultra-stiff, lightweight, and flow-optimized. Three lengths for maximum efficiency and lightning-fast response.

**Stabilizer**  
The CFS stabilizers give every frontwing its own unique character – from extremely stable, forgiving flight to maximum agility and responsiveness. With different surface areas, profiles, and thicknesses, you can fine-tune stability, speed, and manoeuvrability to your exact preference.

**Fuselage**  
The CNC milled aluminium fuselage combines maximum stiffness with low weight and perfect precision fit. Three lengths offer a choice between nimble handling, balanced all-round performance, and maximum directional stability. Precisely manufactured, corrosion-resistant, and fitted with stainless steel inserts for lasting durability.

**Perfect Match:**  
For the VERT frontwings, we recommend the CFS220 stabilizer. Riders seeking maximum agility and speed should opt for the CFS190 stabilizer. The 70 cm fuselage offers the most stable ride. For tighter turning radii and more efficient pumping, especially in waves, we recommend the 64 cm fuselage. For maximum pop in freestyle, choose the 60 cm fuselage.





# SHOP RECOMMENDATIONS - INDIVIDUAL PRODUCTS

Beside the complete set, we recommend to add all individual products including their respective sizes as listed below in your system. That allows your customers to buy individual parts as an upgrade to their existing system. All details, descriptions and images can be found in the provided media kits.

## CFS SPECTRUM FRONTWING



- 850
- 1250
- 1550
- 1850
- 2150

## CFS VERT FRONTWING



- 700
- 850
- 1050

## CFS PULSE FRONTWING



- 1990

## CFS CARBON MAST



- 74
- 82
- 90

## CFS ALUMINIUM MAST



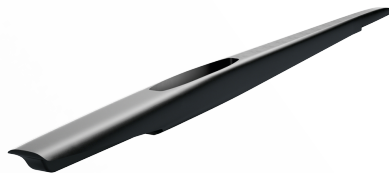
- 60
- 70
- 80
- 90
- MASTBASE

## CFS STABILIZERS



- 190
- 220
- 300

## CFS FUSELAGES



- 60
- 64
- 70

DOWNLOAD TEXTS & IMAGES



# THANK YOU.

We truly appreciate the effort you put into presenting the CORE CFS system in the best possible way in your shops. Your commitment is key to helping riders find their perfect setup and to making the CFS story come alive at retail.

Of course, our team is always here to support you with any questions or assistance you may need. Together, we'll make sure you have all the tools at hand to guide your customers with confidence.

We're excited to launch this new chapter in foiling with you.

